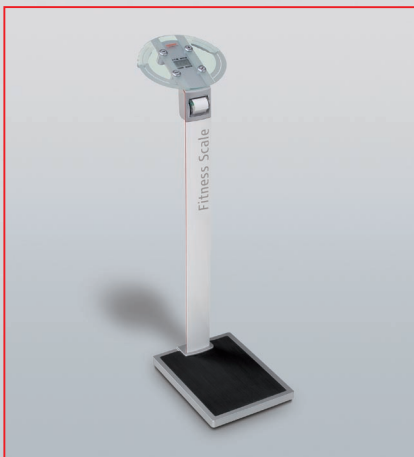


FITNESS SCALE

PRODUCT NUMBER 7850

Medical, health and well-being



- › Body analysis function
- › Menu-guided operation and data input
- › Available in 17 languages
- › Individual definition of clothing percentage deduction
- › Impedance measurement via the hands
- › Thermal printer for printing vouchers

FITNESS SCALE

PRODUCT NUMBER 7850

Features



The innovative fitness scale is ideally suited for use in fitness studios, pharmacies, nutrition counselling and wellness hotels. Besides weight and body mass index, the body analysis function includes a precise measurement of muscle, fat and water balance and the calculation of the current metabolic rate. Since measurement is via the hands, the patient can stand on the scale in shoes. This is a convenient solution and saves time. Compared to conventional analysis scales, this scale is particularly easy to operate and requires no complicated, detailed instructions for use. The integrated printer prints out the weight and analysis data including individual assessment. The data can then be documented and is retrievable for long periods of time.

Available in following languages:

German, English, French, Spanish, Italian, Greek, Hungarian, Dutch, Czech, Danish, Polish, Russian, Swedish, Norwegian, Slovakian, Finnish, Turkish

Technical data

- > Electronic weighing system with 4 load cells
- > Switchable to St/lb/oz units
- > Battery backed clock
- > Power supply from power adapter

- > Backlit LCD with 17 mm high digits
- > 4 keys for data input
- > 4 illuminated information fields
- > Platform size: lxxh 370 x 480 x 45 mm
- > USB data cable

Design

- > Optimised conditions for hygiene and handling, impedance measurement via the hands (not via bare feet)
- > Glass surface easy to clean
- > Clothing weight included in analysis data calculation
- > Paper reel easy to change with „easy paper loading“ function
- > Heavy weight of base plate makes scale very stable
- > Time indicator
- > Printout of date/time, weight, analysis data and assessment
- > Aluminium stand
- > Incl. CD-Rom with software to edit the print-out and settings
- > Gravity settings adjustable

Ordering information

Order Numbers	Weighing range	Divisions	Dimensions	Weight
	kg	g	mm	kg
7850.02.001	180	100	370 x 670 x 1 290	17.8

Your Soehnle Professional dealer:

www.soehnle-professional.com